

Best Buddies CHAPTER

ROADMAP



Define chapter leadership roles

Advertise Best Buddies at your school to recruit members

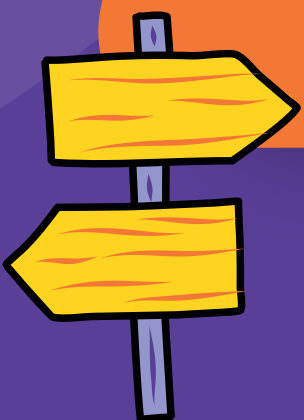
Hold an interest meeting for students to attend

Collect membership applications from students

Create one-to-one friendship matches

Plan and host fun, inclusive events throughout the year

Attend Best Buddies Leadership Trainings



DEFINE CHAPTER LEADERSHIP ROLES



Your school should pick leadership roles that best support and fit the needs of your chapter. Some examples include:

- **Chapter President** (required)
- **Buddy Director** (required)
- **Advisor** (Faculty / Special Education, required)
- **Vice President**
- **Secretary**
- **Treasurer**
- **Social Media Manager**
- **Events Director**
- **Recruitment Director**

ADVERTISE BEST BUDDIES AT YOUR SCHOOL

Spreading the word about Best Buddies at your school is vital to get your chapter off to a strong start. Here are some examples and tips for how to recruit members:


Table at school events and during lunch

Social Media posts sharing information and stories

Eye-catching flyers or posters

Participate in the school activities fair


HOLD AN INTEREST MEETING FOR STUDENTS



Organize and schedule an interest meeting for students to learn more about Best Buddies. Utilize the sample meeting agenda on BBU.



COLLECT MEMBERSHIP APPLICATIONS

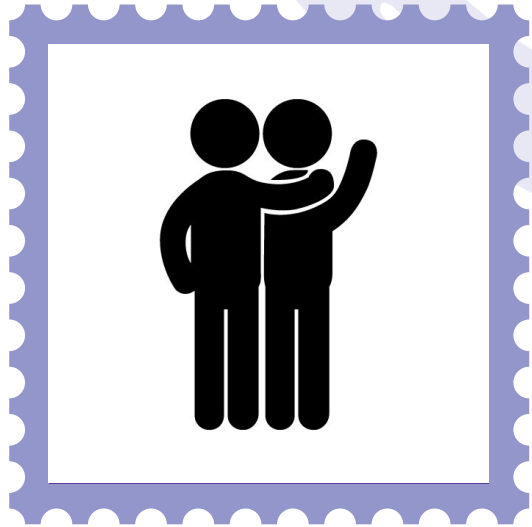


Each participant must fill out an online application at bestbuddies.org/join.

Chapter leaders will have access to this information through BB360.



CREATE ONE-TO-ONE FRIENDSHIP MATCHES



Using member applications and matching surveys, create matches based on interests and availability. Matches should be one-to-one, with one person with IDD and one person without.



Once matches are made, host a "Meet Your Buddy" Match Party to introduce new buddy pairs!



HOST INCLUSIVE EVENTS THROUGHOUT THE YEAR

Events and meetings are a great way to keep members engaged and connected!

Match Party

Game Night

Bowling

Sporting Event

Dance Party

Karaoke

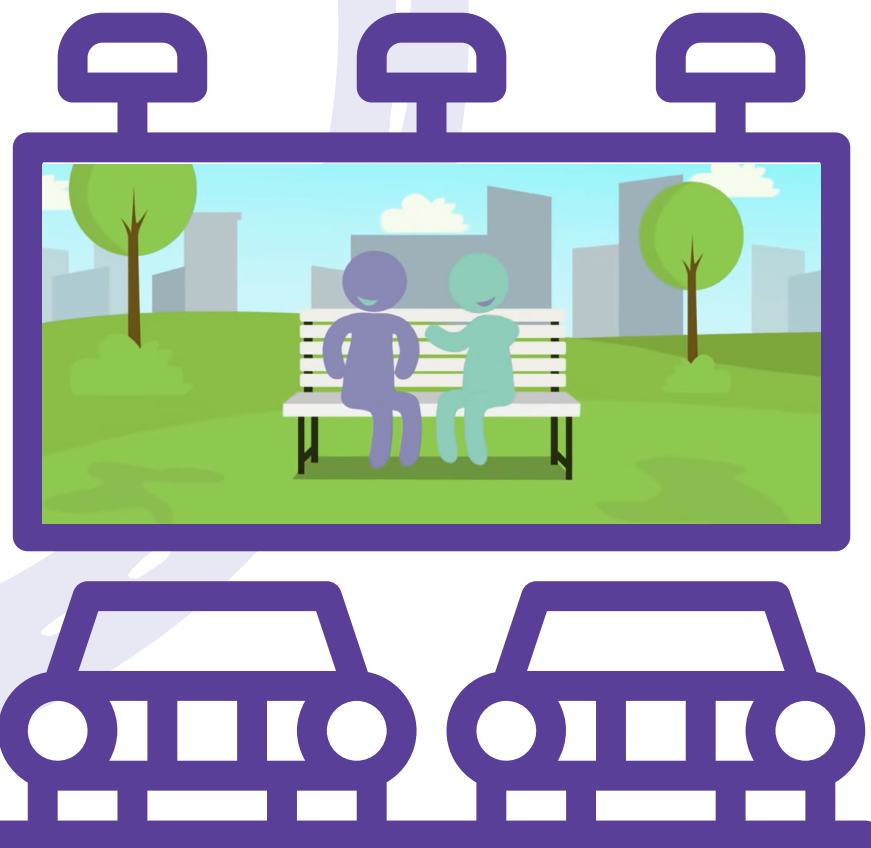
ATTEND BEST BUDDIES LEADERSHIP TRAININGS

BESTBUDDIES
LEADERSHIP CONFERENCE

Best Buddies Leadership Conference is held annually in July at Indiana University. BBLC unites Best Buddies leaders, volunteers, and community advocates from around the globe to imagine, create, lead, and empower the future of the disability rights and inclusion movement. Learn more at bestbuddies.org/BBLC.

Keep an eye out for other local leadership training opportunities throughout the year, including Leadership Training Day in the Fall and Back to Best Buddies training in the Spring.

To access Best Buddies training and recruitment videos detour to BBU!



BEST BUDDIES UNIVERSITY

Best Buddies University (BBU) provides chapter leaders, advisors, and volunteers valuable information, resources, and tools to support members as they cultivate friendships and advance the Best Buddies mission in their schools and communities.



BB360 is the chapter management portal for chapter officers and advisors. This is your one-stop shop for managing your members, matches, events, and more!





**You are on the
fastest route to
having a fantastic
year with Best
Buddies!**

CONTACT

BESTBUDDIES®



BEST BUDDIES®

