

Symptoms of Respiratory Illness like COVID-19

Patients with COVID-19 have experienced mild to severe respiratory illness.

Symptoms* can include

FEVER

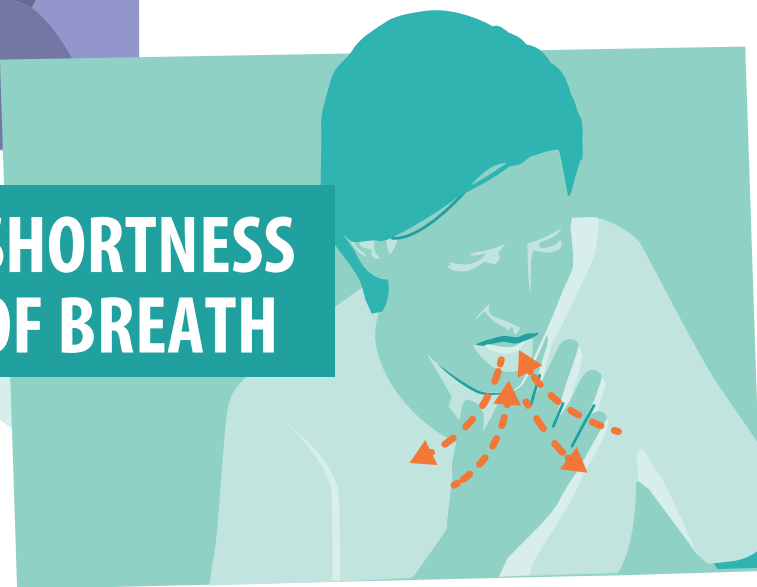


COUGH



*Symptoms may appear 2-14 days after exposure.

SHORTNESS OF BREATH



Seek medical advice if you develop symptoms, and have been in close contact with a person known to have COVID-19 or if you live in or have recently been in an area with ongoing spread of COVID-19.



Best Buddies is committed to the health and safety of participants, volunteers and employees. Please be sure to self-monitor for any related symptoms as described by the CDC. [Click here for more information.](#)



www.cdc.gov