

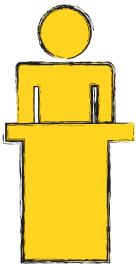


# Welcome to Best Buddies!

*What you need to start your Best Buddies citizens chapter*

## **INCLUSIVE LEADERSHIP**

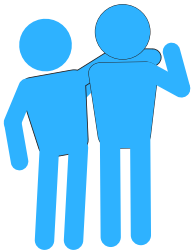
---



Find your leader: identify one point person at your workplace to serve as the site's chief communicator with company volunteers, community participants, and Best Buddies staff.

## **OPPORTUNITIES FOR FRIENDSHIP**

---



Find your people: recruit interested volunteers at your workplace and partner with a local host site (day program or group home for people with disabilities) who wanted to be matched in a friendship

## **SIGN UP**

---

Ensure all volunteers sign up on [www.bestbuddiesonline.org](http://www.bestbuddiesonline.org) and complete a background check prior to participation.

## **SHARE YOUR SUCCESSES**

---

We want to hear about all the fun you are having! Members should plan to participate in at least four events a year and share what they do together on their Best Buddies Online portal.